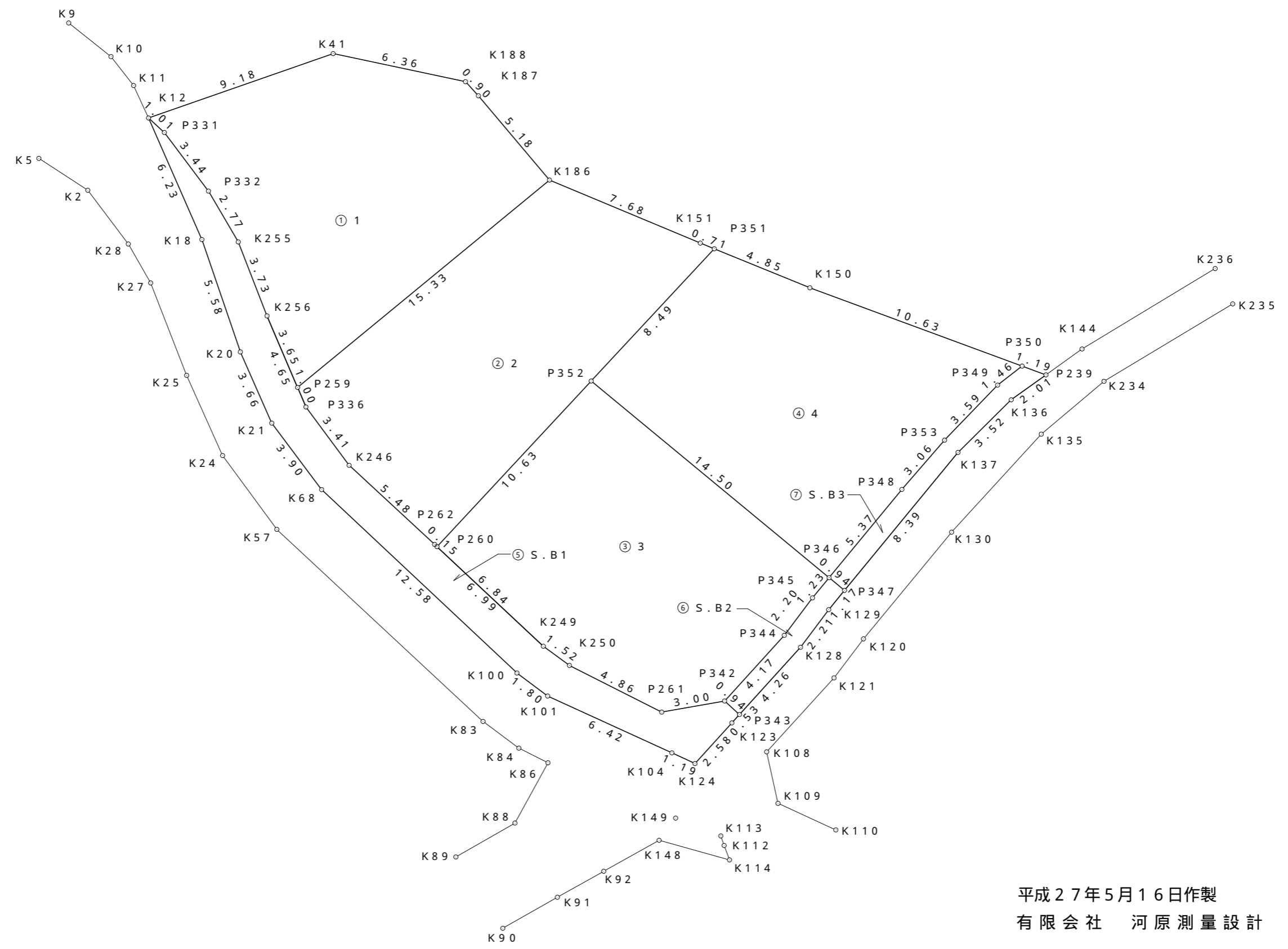
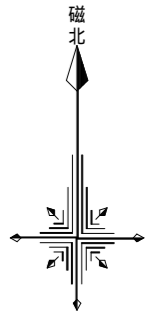


三浦郡葉山町一色字平松 1 3 7 7

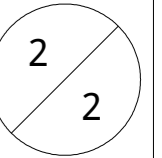
分割図 縮尺：1 / 2 0 0



平成27年5月16日作製
有限会社 河原測量設計

三浦郡葉山町一色字平松1377

分割図求積図



地番 ① 1				
NO	Xn	Yn	Yn+1-Yn-1	Xn · (Yn+1-Yn-1)
K186	294.063	322.071	8.496	2498.359248
K187	298.020	318.733	-3.945	-1175.688900
K188	298.681	318.126	-6.825	-2038.497825
K41	300.000	311.908	-14.890	-4467.000000
K12	296.977	303.236	-7.930	-2355.027610
P331	296.295	303.978	2.815	834.070425
P332	293.545	306.051	3.472	1019.188240
K255	291.157	307.450	2.752	801.264064
K256	287.682	308.803	2.787	801.769734
P259	284.324	310.237	13.268	3772.410832
合計				-309.151792
合計面積				154.5758960
地積				154.57 m ²

地番 ② 2				
NO	Xn	Yn	Yn+1-Yn-1	Xn · (Yn+1-Yn-1)
K186	294.063	322.071	-18.922	-5564.260086
P259	284.324	310.237	-11.442	-3253.235208
P336	283.406	310.629	2.422	686.409332
K246	280.667	312.659	6.049	1697.754683
P262	276.949	316.678	4.129	1143.522421
P260	276.846	316.788	7.353	2035.648638
P352	284.625	324.031	13.026	3707.525250
P351	290.835	329.814	5.128	1491.401880
K151	291.102	329.159	-7.743	-2254.002786
合計				-309.235876
合計面積				154.6179380
地積				154.61 m ²

地番 ③ 3				
NO	Xn	Yn	Yn+1-Yn-1	Xn · (Yn+1-Yn-1)
P352	284.625	324.031	-18.422	-5243.361750
P260	276.846	316.788	-2.247	-622.072962
K249	272.170	321.784	6.220	1692.897400
K250	271.270	323.008	5.562	1508.803740
P261	269.076	327.346	7.292	1962.102192
P342	269.599	330.300	5.758	1552.351042
P344	272.683	333.104	4.129	1125.908107
P345	274.443	334.429	2.106	577.976958
P346	275.391	335.210	-10.398	-2863.515618
合計				-308.910891
合計面積				154.4554455
地積				154.45 m ²

地番 ④ 4				
NO	Xn	Yn	Yn+1-Yn-1	Xn · (Yn+1-Yn-1)
P351	290.835	329.814	-10.275	-2988.329625
P352	284.625	324.031	5.396	1535.836500
P346	275.391	335.210	14.596	4019.607036
P348	279.535	338.627	5.422	1515.638770
P353	281.847	340.632	4.499	1268.029653
P349	284.434	343.126	3.644	1036.477496
P350	285.326	344.276	-8.820	-2516.575320
K150	289.002	334.306	-14.462	-4179.546924
合計				-308.862414
合計面積				154.4312070
地積				154.43 m ²

地番 ⑤ S.B1				
NO	Xn	Yn	Yn+1-Yn-1	Xn · (Yn+1-Yn-1)
K12	296.977	303.236	1.764	523.867428
K18	291.269	305.742	4.312	1255.951928
K20	285.990	307.548	3.284	939.191160
K21	282.647	309.026	3.820	1079.711540
K68	279.524	311.368	11.518	3219.557432
K100	270.912	320.544	10.617	2876.272704
K101	269.831	321.985	7.279	1964.099849
K104	267.163	327.823	6.920	1848.767960
K124	266.663	328.905	2.818	751.456334
K123	268.570	330.641	2.094	562.385580
P343	268.964	330.999	-0.341	-91.716724
P342	269.599	330.300	-3.653	-984.845147
P261	269.076	327.346	-7.292	-1962.102192
K250	271.270	323.008	-5.562	-1508.803740
K249	272.170	321.784	-6.330	-1722.836100
P262	276.949	316.678	-9.125	-2527.159625
K246	280.667	312.659	-6.049	-1697.754683
P336	283.406	310.629	-3.856	-1092.813536
K256	287.682	308.803	-3.179	-914.541078
K255	291.157	307.450	-2.752	-801.264064
P332	293.545	306.051	-3.472	-1019.188240
P331	296.295	303.978	-2.815	-834.070425
合計				-135.833639
合計面積				67.9168195
地積				67.91 m ²

地番 ⑥ S.B2				
NO	Xn	Yn	Yn+1-Yn-1	Xn · (Yn+1-Yn-1)
P347	274.793	335.934	0.021	5.770653
P346	275.391	335.210	-1.505	-414.463455
P345	274.443	334.429	-2.106	-577.976958
P344	272.683	333.104	-4.129	-1125.908107
P342	269.599	330.300	-2.105	-567.505895
P343	268.964	330.999	3.565	958.856660
K128	272.121	333.865	4.190	1140.186990
K129	273.887	335.189	2.069	566.672203
合計				-14.367909
合計面積				7.1839545
地積				7.18 m ²

地番 ⑦ S.B3				
NO	Xn	Yn	Yn+1-Yn-1	Xn · (Yn+1-Yn-1)
P239	284.913	345.396	0.511	145.590543
P350	285.326	344.276	-2.270	-647.690020
P349	284.434	343.126	-3.644	-1036.477496
P353	281.847	340.632	-4.499	-1268.029653
P348	279.535	338.627	-5.422	-1515.638770
P346	275.391	335.210	-2.693	-741.627963
P347	274.793	335.934	6.053	1663.322029
K137	281.270	341.263	7.831	2202.625370
K136	283.743	343.765	4.133	1172.709819
合計				-25.216141
合計面積				12.6080705
地積				12.60 m ²

地番	面積
① 1	154.5758960 m ²
② 2	154.6179380 m ²
③ 3	154.4554455 m ²
④ 4	154.4312070 m ²
⑤ S.B1	67.9168195 m ²
⑥ S.B2	7.1839545 m ²
⑦ S.B3	12.6080705 m ²
総合計面積	705.7893310 m ²